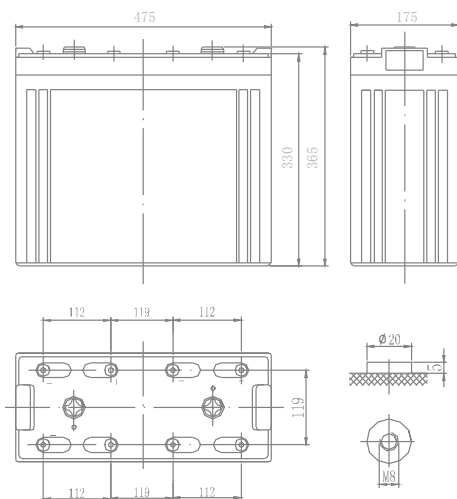




# HIGH PERFORMANCE MR 2-1200 Max

**VALVE REGULATED LEAD ACID  
2V FLAT PASTED PLATE  
BATTERY**



## Innovative Features

- ☑ Valve Regulated Lead Acid (V.R.L.A.) design
- ☑ Fully tank formed plates
- ☑ Never needs addition of water
- ☑ Spill-proof and leak-proof
- ☑ Proprietary Fixed Orifice Plate Pasting technology applying active materials on both sides of the grid for consistent cell-to-cell performance, higher capacity and uniform grid protection.
- ☑ Operates at a low internal pressure
- ☑ For use in vertical or horizontal position
- ☑ Each cell has a low pressure safety release venting system
- ☑ Standard: Reinforced ABS (UL 94HB) container and cover.  
Optional: Flame-retardant reinforced ABS container and cover compliant with U.L.94 V-0 with an Oxygen limiting Index of greater than 28%
- ☑ Nano-Carbon enhanced active material to maximize cycle performance and PSoC operation
- ☑ Low calcium Lead/Tin alloy plates for efficient gas recombination for long life in both cycling and float applications

## Performance Specifications

<b>Normal Voltage</b>	2V
<b>Capacity</b>	1200 Ah @ 10hr to 1.80V per cell @ 20°C (68°F)
<b>Dimension</b>	Length x Width x Height x Total Height: 475 x 175 x 330 x 365 (mm)
<b>Weight</b>	Approx. 77.5 kg (171 lbs)
<b>Internal Resistance</b>	Approx. 0.17 mΩ
<b>Short Circuit Current</b>	9500 A
<b>Self Discharge @ 25°C (77°F)</b>	No more than 3% after 30 days storage
<b>Applicable Operating Temperature Range</b>	-40°C~70°C (40°F~158°F)
<b>Ideal Operating Temperature Range</b>	20°C~30°C (68°F~86°F)
<b>Maximum Charge Current</b>	230 A
<b>Charging Voltage @ 25°C (77°F)</b>	Float: 2.23V, Temps coefficient -3 mV/°C Cycle: 2.30V
<b>Contain Materials</b>	ABS
<b>Terminal Type</b>	F-M8
<b>Capacity Affected by Temperature</b>	105% @ 40°C 85% @ 0°C 60% @ -20°C



Constant Current Discharge Characteristics - Watts Per Cell @ 20°C (68°F)

Final VPC	1.5hr	2hr	3hr	4hr	5hr	6hr	8hr	10hr	12hr	20hr	24hr
1.85	983	820	613	480	400	350	284	235	200	164	110
1.80	1034	864	646	506	421	369	300	248	211	173	116
1.75	1065	891	666	523	435	381	310	256	219	179	120

Constant Power Discharge Characteristics - Amperes Per Cell @ 20°C (68°F)

Final VPC	1.5hr	2hr	3hr	4hr	5hr	6hr	8hr	10hr	12hr	20hr	24hr
1.85	491	407	301	235	195	169	137	113	96.0	59.2	52.6
1.80	519	432	321	250	206	180	145	120	102	62.8	55.8
1.75	542	450	334	259	215	187	152	125	107	65.6	58.3

