

ESM 55-156

POLYCRYSTALLINE SOLAR MODULE



High module conversion efficiency, through superior manufacturing technology



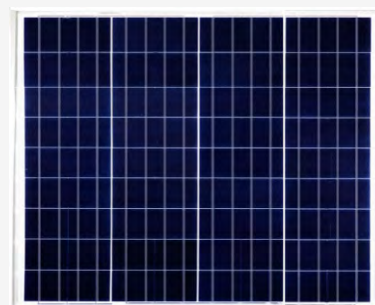
Easy installation and handling for various applications



Entire module certified to withstand high wind loads (2400 Pa) and snow loads (5400 Pa)



ISO9001, OHSAS18001, ISO14001



An EverExceed high-power residential solar module is an aesthetic addition to most roofs

ENGINEERING EXCELLENCE

The perfect combination of high performance and design

ADVANCED AESTHETICS

Has an elegant appearance that blends beautifully with your home roof line

DURABLE

Provides long life and enhanced cell performance

HIGH PERFORMANCE

Uses advanced surface texturing to improve efficiency



EverExceed PV modules offer BTS-leading performance for a variety of applications

Power your application

When you choose EverExceed, you get more well-engineered products, you also get our proven reliability, outstanding customer service and the assurance of our 25-year limited warranty

55 Watt

Electrical Characteristics

Type of Cell	Polycrystalline silicon
Cell Size(mm)	156mm
Module Efficiency	15.20%
Cell Configuration	36(4x9)
Size of module (mm)	540x670x30mm
Weight per piece (Kg)	4Kg
Maximum power (Wp)	55W
Maximum power voltage (V)	19.0V
Maximum power current (A)	2.89A
Open circuit voltage (V)	23.1V
Short circuit current (A)	3.02A
Tolerance of Pmax	0~+5W

Standard Operating Conditions

Maximum system voltage (V)	1000V
Temperature coefficients of Isc (%)	0.053%/°C
Temperature coefficients of Voc (%)	-0.33%/°C
Temperature coefficients of Pm (%)	-0.42%/°C
NOCT (°C)	45°C±2°C
Temperature range	-40°C to +85°C
Surface maximum load capacity	60m/s (200kg/sq.m)
Series fuse rating	6A

Other Characteristics

Junction box type	Ip65 rated
Connectors and cables type	2.5mm ²
Length of cables (mm)	450mm
Frame (material, corners, etc.)	Anodized aluminum alloy
Glass	High transmissivity low-iron 3.2 mm toughened glass
FF (%)	≥ 78.84%

QUALIFICATIONS

IEC	DVE	IEC 61215	IEC 61730	RoHS
CE	EMC	ISO		



10 years material and workmanship guarantee

95% power output guarantee for 5 years
90% power output guarantee for 10 years
80% power output guarantee for 25 years

EverExceed will not accept responsibility for damage caused to other equipment

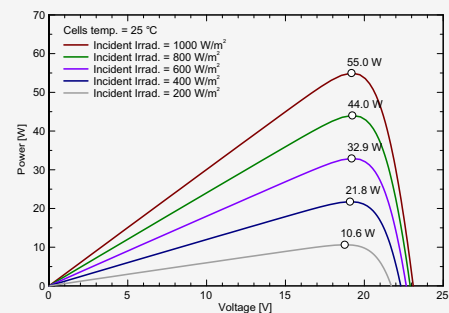
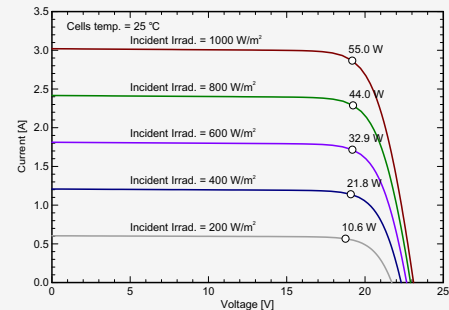
Contact EverExceed to receive our latest product information

5-year
95% power output

10-year
90% power output

25-year
80% power output

Characteristics (Module I-V Graph 55W)



STC: Irradiance 1000W/m², Module temperature 25°C, AM1.5 spectrum.

Dimension

